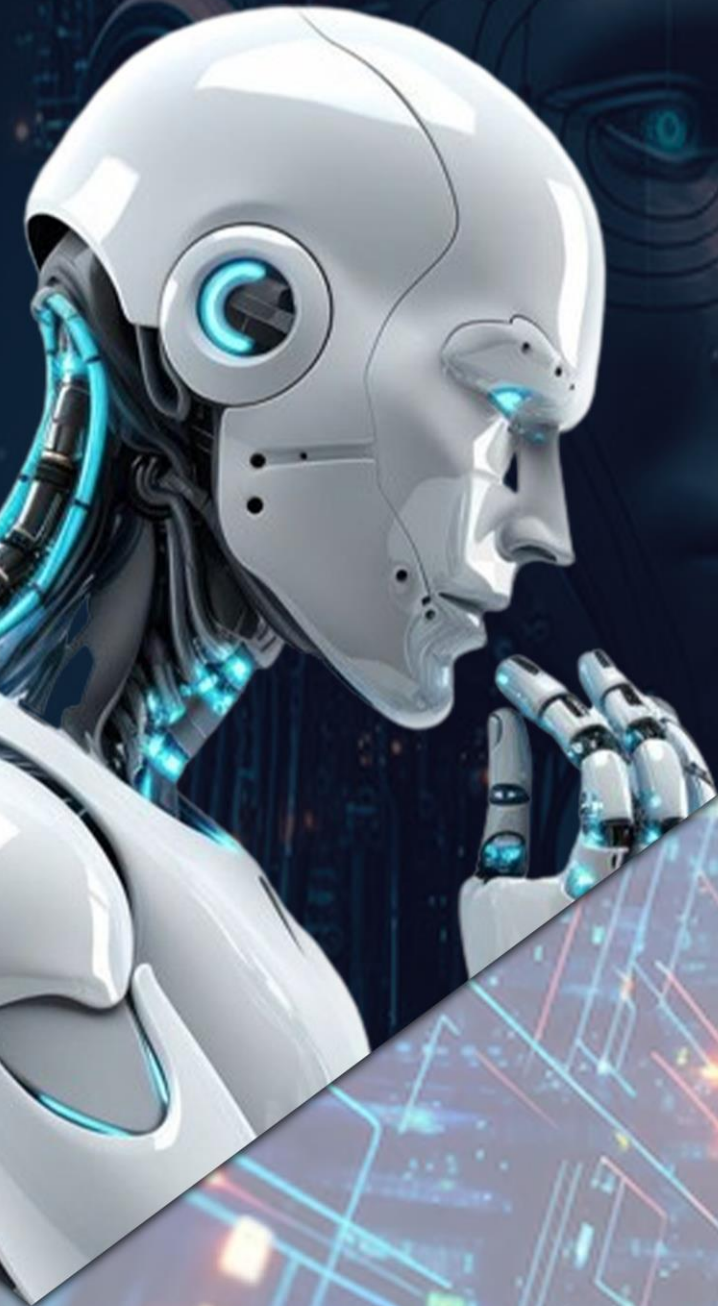


BODMAS ENGINEERING

GGSIPO Round-3

Cut-Off 2024-25



bodmas
Education Services
— Your Dream Our Mission —

Call us now!
8448599014

Maharaja Agrasen Institute of Technology, Rohini, Delhi

Program	Quota	Category	R1 Rank	R2 Rank	R3 Rank
Computer Science & Engineering (Shift I)	HS	OPNO	61253	76986	80744
Computer Science & Engineering (Shift I)	HS	SCNO	302412	387219	458197
Computer Science & Engineering (Shift I)	HS	STNO	331979	821075	357281
Computer Science & Engineering (Shift I)	HS	OPDF	720686	162066	NA
Computer Science & Engineering (Shift I)	HS	OPPH	1205019	419925	805191
Computer Science & Engineering (Shift I)	OS	OPNO	37928	46402	47478
Computer Science & Engineering (Shift I)	OS	SCNO	184616	216843	NA
Computer Science & Engineering (Shift I)	OS	OPDF	295618	56013	NA
Computer Science & Engineering (Shift I)	OS	OPPH	350097	503669	NA
Computer Science & Engineering (Shift I)	OS	STNO	390835	541529	NA
Computer Science & Engineering (Shift II)	HS	OPNO	66357	81838	84913
Computer Science & Engineering (Shift II)	HS	OPDF	114941	176075	180171
Computer Science & Engineering (Shift II)	HS	SCNO	333927	415545	488851
Computer Science & Engineering (Shift II)	OS	OPNO	40212	47563	49111
Computer Science & Engineering (Shift II)	OS	SCNO	125894	NA	NA
Computer Science & Engineering (Shift II)	OS	STNO	410531	611779	NA
Computer Science & Technology	HS	OPNO	77581	95763	100587
Computer Science & Technology	HS	OPDF	158560	204834	213257
Computer Science & Technology	HS	SCNO	387748	489268	628212
Computer Science & Technology	HS	STNO	864893	NA	NA
Computer Science & Technology	HS	OPPH	1221085	NA	NA
Computer Science & Technology	OS	OPNO	42870	51667	55662
Computer Science & Technology	OS	OPDF	165272	122753	NA
Computer Science & Technology	OS	SCNO	213647	248211	204820
Computer Science & Technology	OS	OPPH	381683	1174702	NA
Computer Science & Technology	OS	STNO	387021	664784	NA
CSE - AI	HS	OPNO	67904	85526	88774
CSE - AI	HS	OPDF	125614	180171	165966
CSE - AI	HS	SCNO	311776	422553	515704
CSE - AI	HS	OPPH	615374	NA	707821
CSE - AI	OS	OPNO	39857	50223	51667
CSE - AI	OS	SCNO	183218	246532	203319
CSE - AI	OS	STNO	443017	454076	NA
CSE- AIML	HS	OPNO	66288	81869	85533
CSE- AIML	HS	OPDF	102654	162479	NA
CSE- AIML	HS	SCNO	307696	425427	462509
CSE- AIML	OS	OPNO	39660	49906	50398
CSE- AIML	OS	SCNO	158829	238703	NA
CSE- AIML	OS	STNO	401236	443017	NA

CSE- DS	HS	OPNO	72385	89825	94268
CSE- DS	HS	OPDF	142455	213257	192295
CSE- DS	HS	SCNO	342435	463382	611840
CSE- DS	OS	OPNO	41700	50774	54929
CSE- DS	OS	SCNO	193039	244263	NA
CSE- DS	OS	STNO	418467	517305	NA
Electrical & Electronics Engineering	HS	OPNO	143740	178300	193657
Electrical & Electronics Engineering	HS	OPDF	362224	477020	NA
Electrical & Electronics Engineering	HS	SCNO	655685	1182093	1010481
Electrical & Electronics Engineering	OS	OPNO	59568	72026	78004
Electrical & Electronics Engineering	OS	SCNO	246122	264420	NA
Electrical & Electronics Engineering	OS	STNO	513064	NA	521367
Electronics & Comm.- Advance Comm. Technology	HS	OPNO	123074	153190	157089
Electronics & Comm.- Advance Comm. Technology	HS	OPDF	337878	399089	NA
Electronics & Comm.- Advance Comm. Technology	HS	SCNO	654966	698851	1287006
Electronics & Comm.- Advance Comm. Technology	OS	OPNO	55912	64960	65861
Electronics & Comm.- Advance Comm. Technology	OS	SCNO	227591	246122	315134
Electronics & Comm.- Advance Comm. Technology	OS	STNO	523207	NA	NA
Electronics & Communication Engineering	HS	OPNO	101963	126420	131268
Electronics & Communication Engineering	HS	OPDF	272050	362224	334579
Electronics & Communication Engineering	HS	SCNO	516277	666028	842323
Electronics & Communication Engineering	OS	OPNO	50084	60595	61156
Electronics & Communication Engineering	OS	SCNO	142261	NA	246122
Electronics & Communication Engineering	OS	STNO	401562	NA	NA

Electronics Engg.- VLSI Design & Technology	HS	OPNO	136230	167952	178300
Electronics Engg.- VLSI Design & Technology	HS	OPDF	356435	617147	691309
Electronics Engg.- VLSI Design & Technology	HS	SCNO	669085	976458	1289362
Electronics Engg.- VLSI Design & Technology	OS	OPNO	58186	67324	69503
Electronics Engg.- VLSI Design & Technology	OS	SCNO	236596	264231	335197
Electronics Engg.- VLSI Design & Technology	OS	STNO	602382	NA	NA
Information Technology	HS	OPNO	88654	107249	110890
Information Technology	HS	OPDF	189085	278714	219543
Information Technology	HS	SCNO	417704	528778	707647
Information Technology	OS	OPNO	44873	55080	58152
Information Technology	OS	SCNO	216843	251313	NA
Information Technology	OS	OPDF	380157	163187	108395
Information Technology	OS	OPPH	433231	NA	NA
Information Technology	OS	STNO	475061	602382	NA
Information Technology and Engineering	HS	OPNO	94519	113695	118971
Information Technology and Engineering	HS	SCNO	452863	597060	767791
Information Technology and Engineering	HS	OPDF	1249570	288022	227292
Information Technology and Engineering	OS	OPNO	46283	55923	60365
Information Technology and Engineering	OS	OPDF	122753	540829	NA
Information Technology and Engineering	OS	SCNO	219168	256449	NA
Information Technology and Engineering	OS	STNO	454076	685357	NA
Information Technology and Engineering	OS	OPPH	517737	NA	NA
Mechanical Engineering	HS	OPNO	171879	217937	248340
Mechanical Engineering	HS	OPDF	612744	637282	1030838
Mechanical Engineering	HS	SCNO	706293	901257	999111
Mechanical Engineering	HS	STNO		NA	1100470
Mechanical Engineering	OS	OPNO	65464	86896	89654
Mechanical Engineering	OS	SCNO	259102	286602	358532
Mechanical Engineering	OS	STNO	855781	NA	399243